



# **AFC Coaching Course Laws of the Game**

---

## **“C” Certificate Module**

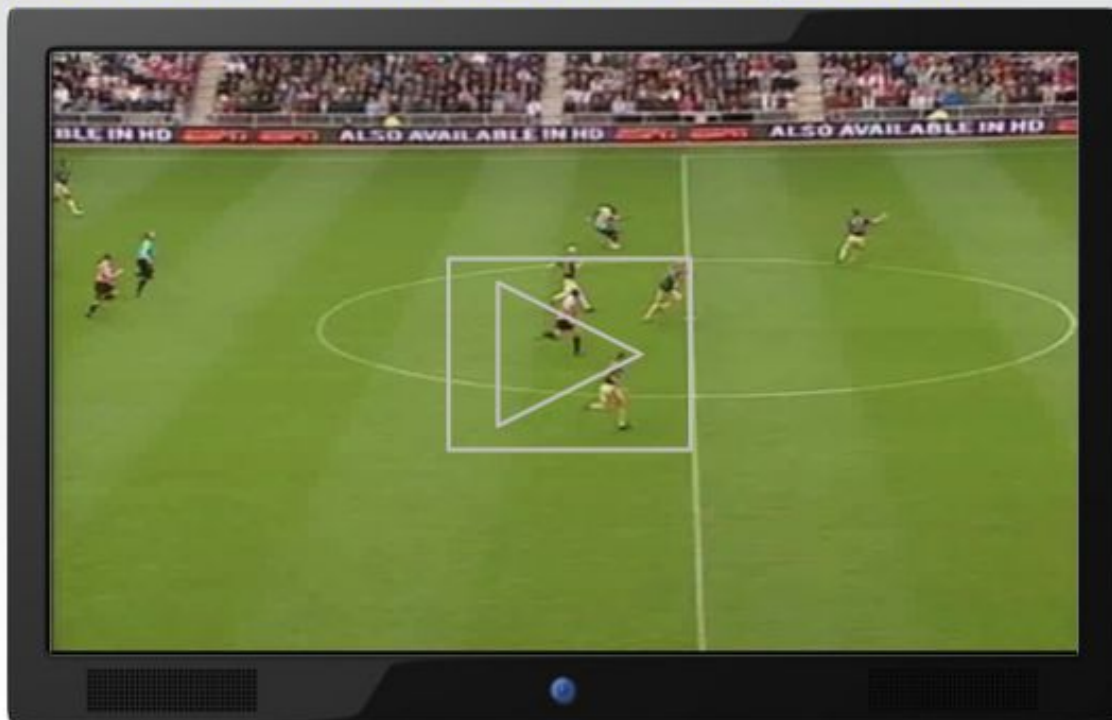


- **To develop your knowledge and understanding of the Laws of the Game theoretically.**
- **To offer opportunities to develop your knowledge on refereeing.**
- **To build on the experiences you have gained in football**



## You are the referee ...

Watch the video clip... what decision would you make?



**The ball hits a beach ball and enters the goal.**

- 1. Would you allow the goal?**
- 2. If not, how would you restart the game?**





## The moral of the situation

- You never stop learning from experience and feedback
- The course is your first step on the learning journey with respect to the Laws of the Game and Refereeing
- During the course we endeavour to create a positive learning atmosphere
- Remember refereeing can also be about opinion, so respect the opinion of referees and your colleagues on the course
- You are welcome to ask questions
- We will endeavour to answer them correctly!

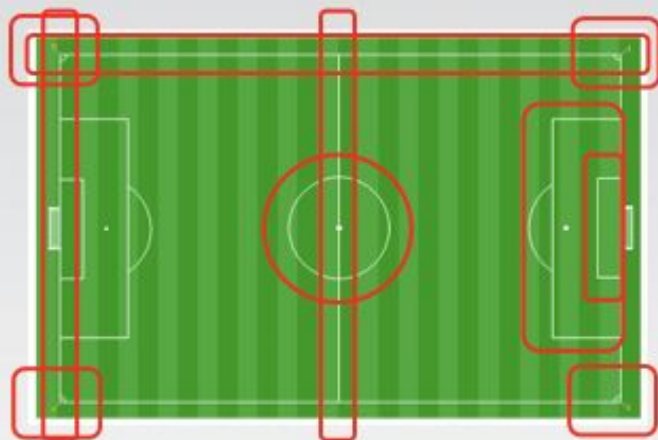


- **Terminology**

- ✓ Touch Line
- ✓ Goal Line, Goals
- ✓ Halfway line
- ✓ Penalty Area, Penalty Arc, Penalty Mark
- ✓ Goal Area
- ✓ Centre Circle, Centre mark
- ✓ Corner Arc, Corner Flagposts

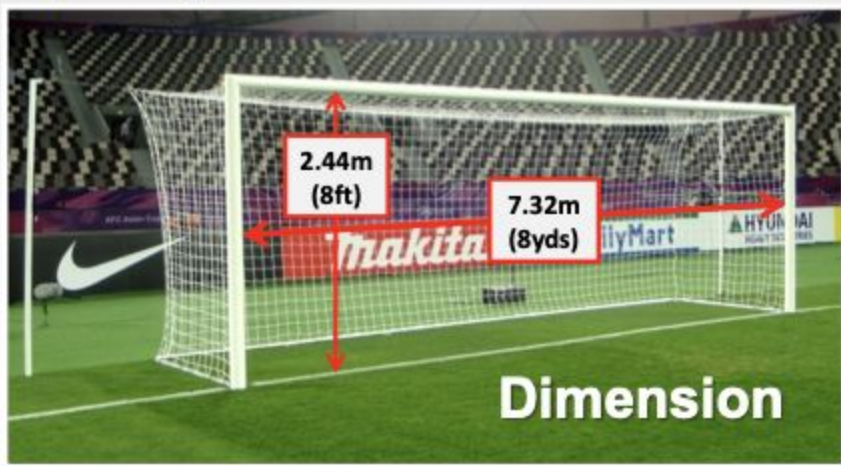
- **Field markings**

- ✓ FOP marked with lines not more than 12cm (5ins)
- ✓ These lines belong to the areas of which they are boundaries



### ▪ goals

- ✓ goalposts and crossbar
  - wood, metal or other approved material
  - square, rectangular, round or elliptical shape (not dangerous)
  - anchored securely to the ground
    - portable goals must satisfy this requirement



❖ *What is the colour of goals ?*

- **number of occupants**
    - ✓ competition rules – 3 or less
    - ✓ occupants identified before match/roster
  - **coaching**
    - ✓ must be wearing lanyard
    - ✓ No need to remain seated
  - **entering the FOP**
    - ✓ with referee's permission only
  - **conduct**
    - ✓ Coach and other occupants must behave in a responsible manner
- ❖ *Can a coach be shown a Red Card?*
- ❖ *What is size of technical area if not marked on pitch?*
- ❖ *A coach who is sent off - can he communicate with technical staff on the bench?*





- **number of players**
  - ✓ a match is played by two teams
  - ✓ each team with 7/9/11 players
  - ✓ one of whom is goalkeeper
- **number of substitutions**
  - ✓ unlimited substitutions in CYSL
  - ✓ Sub on: kick-off, goal kicks, Throw ins your possession (or triggered)
  - ✓ Injured players – one for one
  - ✓ Cannot sub from bench unless injury
  - ✓ Players must be at midfield prior to stoppage

❖ *Is there a minimum number of players in a team?*



- **players sent off - before kick-off**
  - ✓ may be replaced by a named substitute
- **substitute sent off - before kick-off or after play has started**
  - ✓ may not be replaced



## Substitution

**P**lay stopped.

**R**eferee informed

**O**ne off; one on

**C**hange at halfway line

**E**xit = ceases

**E**nter after signal = substitution complete

**D**isciplinary sanctions

❖ *Enters FOP – without referee being informed?*





## A jersey or shirt with sleeves

Undergarments:  
same main colour as the sleeve of the jersey ...

## Shorts

undershorts or tights:  
same main colour of the shorts

## Stockings

taping:  
same colour as socks

## Shinguards

suitable material and size

## Footwear

compulsory





**▪ Safety**

- ✓ not use or wear anything dangerous to himself or another player
- ✓ any kind jewellery - not allowed
- ✓ No hard casts

**▪ Shinguards**

- ✓ covered entirely by stockings
- ✓ reasonable degree of protection



❖ *Is it permitted to wear a wrist band?*



- **Authority**
  - ✓ full authority to enforce LOTG
- **Powers & Duties**
  - ✓ stops, suspend or abandon
  - ✓ allow play to continue ...
  - ✓ take disciplinary action
  - ✓ Act on advice from AR & Field Officials
- **Decision - final**
  - ✓ facts connected with play
  - ✓ goal scored
  - ✓ result of the match



- **Injury**

- ✓ slight → allow play to continue
- ✓ serious → stop play
- ✓ bleeding → player leaves FOP

- **Advantage**

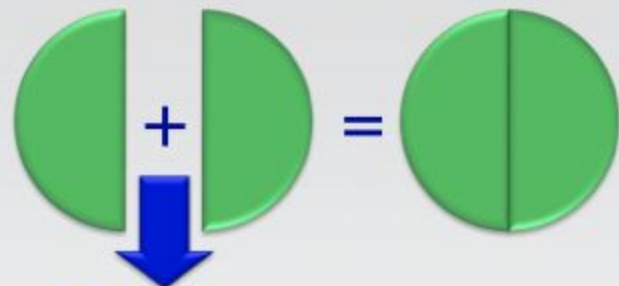
- ✓ team offended benefits



- ❖ *If the anticipated advantage does not ensue at that time – decision?*
- ❖ *Can a referee change his decision?*



- **Period of play**
  - ✓ two equal period of 30/35/40 minutes
  - ❖ *Can the periods be altered?*
  - ❖ *Can duration of a half is extended?*
  
- **Half time interval**
  - ✓ is compulsory
  - ❖ *What is the half time duration*
  
- **Allowance for time lost**
  - ✓ substitution
  - ✓ assessment of injuries
  - ✓ removal of injured players
  - ✓ wasting time
  - ✓ any other cause



**Half-Time**

**Added time**





- **Before a kick-off at the start of a match or extra time**

- ✓ winner → decides the goal it will attack
- ✓ other team → takes kick-off



❖ *think of four occasions start or restart of play is a kick off?*

❖ *the ball is kicked directly into the opponents' goal – decision?*

- **Procedure at kick-off**

- ✓ players own half
- ✓ opponents 8/10 yds from ball
- ✓ kicker does not touch ball a second time
- ✓ ball stationary on centre mark
- ✓ ball in play - kicked & moves forward

- **Infringement**

- ✓ referee orders kick retaken



### ▪ Definition of dropped ball

- ✓ is a method of restarting play
  - when referee stops play, while the ball is in play
  - for any reason not mentioned in the LOTG

### ❖ *Can you think of an example?*

- ✓ serious injury
- ✓ outside interference

### ❖ *why only one team participating?*

*Referee determined possession prior to play stopping. Exception: all drop balls in penalty area goes to the goalkeeper.*

### ❖ *when is the ball in play?*

- ✓ when the ball touches the ground



- **If a dropped ball is kicked directly**
  - ✓ into opponents goal
    - a goal kick is awarded
  - ✓ into teams' own goal
    - a corner kick is awarded



❖ Which balls are in play?



FOP

TOUCH LINE



or play is stopped by the referee





FOP

❖ *which is a goal?*

- **No infringement committed previously**
  - ✓ by the team scoring the goal



GOAL LINE



**X**

TOUCH LINE

FOP

- ❖ *Which feet positions are correct?*
- ❖ *The ball is thrown directly into*
  - *opponents' goal – decision?*
  - *own goal – decision?*

✓ is a method of restarting play

- whole ball passes over goal line =

+

- Last touched by attacking team =

+

- goal is not scored as per LAW 10 =

✓ goal kick

✓ corner kick

✓ kick off

✓ goal kick

✓ kick off

✓ goal kick



#### ▪ Procedure

- ✓ opponents outside penalty area
- ✓ kicker does not touch ball a second time
- ✓ taken from any point within goal area
- ✓ ball in play when kicked directly out of the penalty area

❖ **The ball is kicked directly into**  
 - opponents' goal – decision?  
 - own goal – decision?



- ✓ is a method of restarting play
  - whole ball passes over goal line =

+

- Last touched by defending team =

+

- goal is not scored as per LAW 10 =

- ✓ goal kick
- ✓ corner kick
- ✓ kick off

- ✓ corner kick
- ✓ kick off

- ✓ corner kick



## ▪ Procedure

- ✓ ball - inside corner arc
- ✓ ball in play - kicked and moves
- ✓ opponents 8/10 yds from ball
- ✓ kicker does not touch ball a second time
- ✓ ball in play when kicked & moves

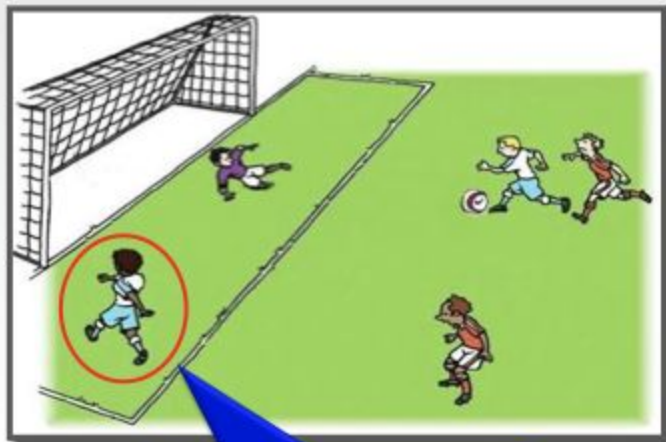
❖ *The ball is kicked directly into  
- opponents' goal - decision?*

❖ *can you move the corner flag post?*

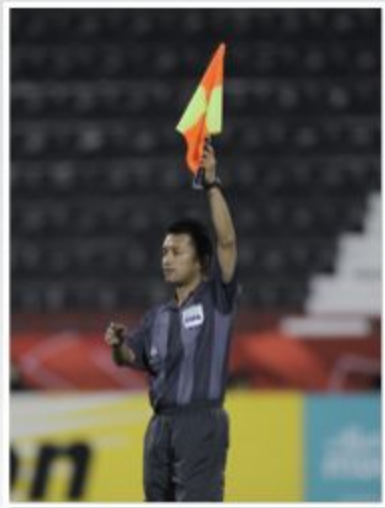


- **Offside position**

- ✓ nearer to opponents' goal line than
  - the ball
  - 2<sup>nd</sup> last opponent
- ✓ in opponents half



**offside position**



**▪ Offside offence**

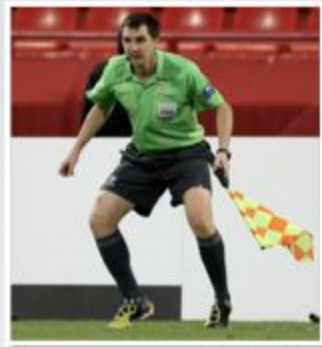
- ✓ the moment the ball touches / played by a team-mate
- ✓ in the opinion of referee
- ✓ involved in active play
  - interfering with play or
  - interfering with an opponent or
  - gaining an advantage

**Offside offence**

- **No offside offence**

✓ if player receives ball directly from:

- goal kick or
- throw-in or
- corner kick



**No offence**



## Direct Free Kick / Indirect Free Kick

### ▪ Procedure

- ✓ ball stationary
  - ✓ opponents - 9.15m from ball / outside PA
  - ✓ kicker does not touch ball a 2<sup>nd</sup> time
  - ✓ taken from where
    - infringement occurred (unless in goal area)
  - ✓ ball in play when
    - kicked and moves or
    - kicked directly out of PA (own PA)
- ❖ *direct free kick - kicked directly into own goal - decision?*
- ❖ *indirect free kick - kicked directly into:*
- *opponent's goal - decision?*
  - *own goal - decision*





- **Direct free kick is awarded for**

- ✓ 7 offences committed
- ✓ carelessly, recklessly or using excessive force
- ✓ against an opponent



kicks or attempts  
to kick



trips



jumps



charges



strikes or attempts  
to strike



pushes



tackles



- **Direct free kick is also awarded for**
  - ✓ any of the 3 offences committed



holds an  
opponent



spits at an  
opponent



handles the ball;  
**deliberately**,  
except for GK within  
own PA

- ❖ ***If any of the 10 offences committed inside own PA***
  - *while ball in play*
  - *against an opponent - decision?*



- **Indirect free kick is awarded for**
  - ✓ any of the 4 offences committed
  - ✓ by goalkeeper
  - ✓ inside his own penalty area ...
    - controlling the ball > 6 sec - using hand
    - touches (hand) the ball again after released it & before touched by another player
    - touches (hand) the ball after it has been deliberately kicked to him by a team mate
    - touches (hand) the ball received directly from a throw-in taken by a team mate



- **Indirect free kick is also awarded**
  - ✓ if in the opinion of the referee, a player
    - plays in a dangerous manner
    - impedes progress of an opponent
    - prevents GK from releasing the ball (hands)
    - commits any other offence not previously mentioned in Law 12, for which play is stopped to caution or send off a player

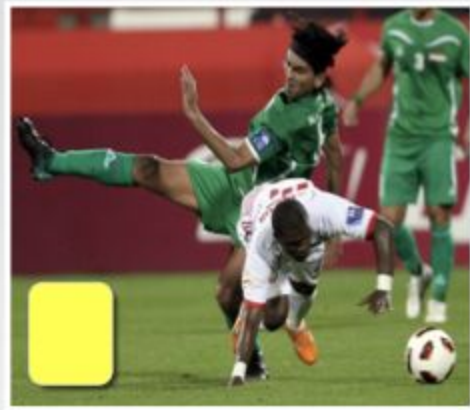




only a player or substitute or substituted player may be shown the red or **yellow** card

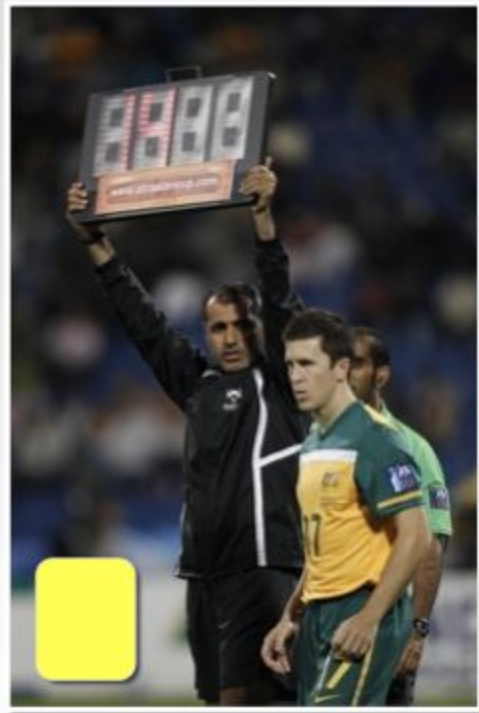
▪ **Cautionable offences**

1. unsporting behaviour
2. dissent by word or action
3. persistent infringement
4. delays restart of play
5. fails to respect the required distance for CK, FK or Throw-in
6. enters or re-enters FOP without referees' permission
7. deliberately leaves FOP without referees' permission



substitute or substituted player is cautioned for any of the three offences

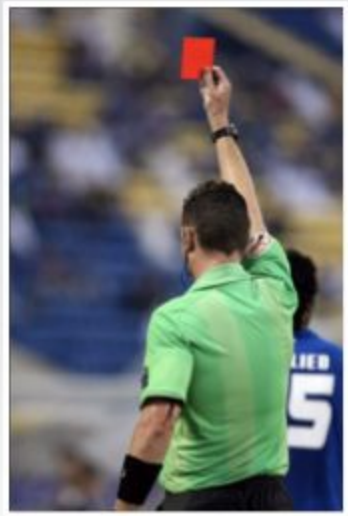
1. is guilty of unsporting behaviour
2. shows dissent by word or action
3. delays the restart of play



only a player or substitute or substituted player may be shown the **red** or yellow card

▪ **Sending-off offences**

1. serious foul play
2. violent conduct
3. Spits at opponent / others
4. DOGSO - handling the ball
5. DOGSO - moving towards the player's goal ...
6. offensive / insulting / abusive language and/or gestures
7. second caution



## ▪ Procedure

- ✓ ball
  - on the penalty mark
  - in play - kicked & moves forward
- ✓ players other than kicker
  - inside FOP
  - outside PA
  - behind penalty mark
  - at least 9.15m from penalty mark
- ✓ defending goalkeeper
  - on goal line
  - facing the kicker
  - between goalposts, until ball is kicked
- ✓ kicker
  - properly identified
  - kick the ball forward
  - does not touch ball a second time

## ▪ Infringement - feinting

- ✓ in the run-up .... is permitted
- ✓ to kick the ball once completed the run-up is an infringement



**unsporting behaviour**





<b>infringement</b>	<b>goal scored</b>	<b>no goal</b>
attacking player	retaken	IFK
defending player	goal	retaken
both	retaken	retaken



# THANK YOU!



Contact your Association Assignor with Questions